

August 2013 Updates

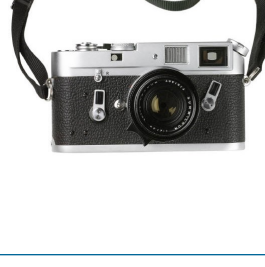
Issue 3, August 2013

This monthly e-newsletter for UCL's E-Learning Champions will alert you to learning technology related developments and upcoming events. Please do forward this on to any of your colleagues who may also benefit. All E-Learning Champions have been subscribed to this list and you are welcome to invite others to subscribe for future newsletters using the link at the bottom of this email.

Did you know?

You can use Microsoft clip-art in your UCL presentations and on Moodle because UCL has a site license.

[Find other free image sources...](#)



UCL & French Embassy Collaborative Science & Technology Workshops

Funding to run 2 day workshops at UCL for between 12-16 participants from UCL and France is now available.

UCL and the French Embassy's Science & Technology Department commenced a five-year Collaboration Agreement in September 2012, to encourage and fund collaborative workshops with a science and/or technology focus.

The workshop initiative follows a programme of annual cycles of UCL-French Embassy lectures.

Applications close 16 September 2013.

[Find out more...](#)

MOOC: Teaching with Moodle: An Introduction

1- 28 September 2013

<http://learn.moodle.net>

This free, four week course is for teachers who would like to use learning platforms to enhance teaching and learning in today's educational environment.

It is also a great opportunity to connect with the vibrant Moodle community dedicated to sharing resources, ideas and anything that could help inspire better teaching practices everywhere.

[Find out more and register...](#)

Rubistar

Rubistar has hundreds of example rubrics and allows you to create your own in a rich variety of subject areas.

A well constructed rubric is a great way of communicating, both to students and fellow assessors, exactly how the marking of an assignment is being approached. However, the construction of effective and comprehensive rubrics can be very time consuming.

[Find out more ...](#)



Lecturecast archiving process

Please note, the yearly archive commenced on 7th August 2013. ALL material listed in the 'Available' and 'Unavailable' tabs within Lecturecast was moved to the 'Archive' tab during this process. This made all content 'Unavailable'.

Now that the archiving process is complete you will need to move any content you wish to be viewed back from the 'Archive' to the 'Available' tab. This is not complicated and details of how to complete this procedure are listed in the [Lecturecast Guide](#).

Content deletion will be carried out starting in October, according to the [Lecturecast Archive Policy](#).

PLEASE NOTE: Archived material will only be deleted two years after the date of recording. If you have any questions or concerns surrounding this procedure please contact ele@ucl.ac.uk

Remember to RESET your Moodle course

For data protection reasons, you must ensure that at the start of a new academic session any student data from the previous session is removed, unless you have express permission from the previous students to use it.

Reset allows you to empty a Moodle course of student contributions (like assignment submissions and forum posts), while retaining content, activities and other settings.

[Find out more ...](#)



The Desktop@UCL rollout is underway

Desktop@UCL is the new Desktop service which will replace the Myriad and WTS 2000 Cluster services from the new academic year.

The Desktop@UCL rollout started in mid-July and is now underway. Approximately 450 computers have been converted in 30 locations and the rollout will continue throughout August and September. Desktop@UCL is being rolled out into all Learning and Teaching spaces including: ISD Managed Cluster Rooms, Halls of Residences and Lecture Theatres. The [rollout schedule](#) is available online.

The rollout is being undertaken in 2 phases: firstly core applications are being rolled out (this includes Windows 7, Office 2013 and web browsers), then each week applications are released. A [list of released applications](#) is available and is updated on a weekly basis. All learning and teaching applications will be available by the start of the new academic year.

If you have booked any Learning and Teaching spaces over the summer and these have already been converted to Desktop@UCL, you will be able to access the Internet and Office applications and any of the released applications. If you require access to a specific application during August and September which is not yet available on Desktop@UCL, please [contact the project team](#) who can assist you with this.

A [full list of applications](#) that will be available on Desktop@UCL by the start of the new academic year is also available.

Summits and Horizons 2014



CALT and ELE are running the popular *Summits and Horizons* e-learning sessions again in 2014 and are currently developing the programme. The team behind these events are looking for suggestions on topics for the final session.

Anyone interested in speaking at this session on May 19 on some aspect of their e-learning activities is warmly invited to contact the programme team. Please email Clive Young (c.p.l.young@ucl.ac.uk) with your ideas as soon as possible.

[Find out more...](#)

E-Learning Case Study

Peerwise: a repository for student-designed MCQs

PeerWise is a free learning tool which allows students to design their own multiple-choice questions (MCQs), add them to the repository and then learn using questions uploaded by their peers. Stefanie Anyadi, Sam Green and Kevin Tang discuss how PeerWise fared when it was piloted on a Linguistics module.

[Find out more ...](#)

[Sign up to the UCL Teaching and Learning newsletter](#) to read news, features, practical information and a column by the Vice-Provost (Education).

Want to test what your students see in Moodle?

Have you ever been deterred from trying something ambitious in Moodle - for example, Groups, Restrict Access, or a Database activity - because you can't see how it works from your students' point of view? [E-Learning Environments](#) (ELE) has set up a cohort of Test Moodle Users which allow you to experiment with when you are designing your Moodle areas. How might these help you? You can test and check as you go along, independently without having to rely on colleagues to pose as students.

To use one or more Test Moodle Accounts, [contact ELE](#). We'll ask you to use them in a Student role only, to keep their passwords a secret, and to unenrol them from your area when you've finished that bit of testing.

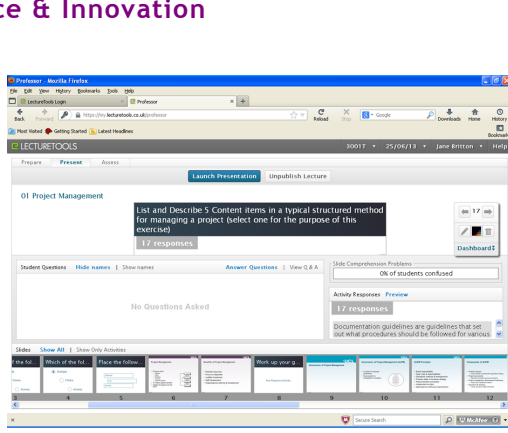
Note that these accounts are shared - potentially quite widely among staff - and anybody logged in with a particular test account can potentially access any other Moodle area to which that account has been enrolled. So if you have restricted materials in your account - for example, patient case studies - ask for a different kind of test account just for your course.

[Find out more ...](#)

LectureTools pilot in Management Science & Innovation

Jane Britton and Matt Whyndham recently piloted LectureTools with a small group of students in their voluntary short course in project management. LectureTools is a cloud-based electronic voting system which students can access via their laptops or mobile devices.

The system works by importing an existing PowerPoint presentation and then adding interactivity to it, through varied question formats. LectureTools allows students to take notes on their devices alongside each slide; they can also flag when they are confused about a particular slide, or submit questions, which will be displayed on the tutor 'dashboard'.



LectureTools presenter interface

In the evaluation, students rated the system positively overall for stimulating their engagement in the subject, allowing them to measure their understanding, for fostering discussion in the classroom and facilitating easy note-taking. In addition, it helped them prepare for their forthcoming examination. Both Jane and Matt felt it was helpful to know what students were thinking and to be able to provide timely feedback, although having a class of students all staring at their laptops at various points was initially disconcerting! Both educators are keen to continue to explore the functionality of LectureTools, particularly how it will integrate with the Echo360 lecture capture system in the future.

[Find out more ...](#)

[Subscribe or unsubscribe from this mailing list](#)

Questions or comments? Email us at ele@ucl.ac.uk or call 020 7679 5678 (ext. 65678).

Can't read this email? [Read this and older newsletters on the UCL Wiki](#).