

Moodle Course Rollover Tool Training

The tool is available to Course Administrators and Tutors to use, and new enhancements to the tool will be released incrementally over the next few months.

Documentation in the [M30 miniguide](#) will be updated.

We will also be running weekly drop-in sessions.



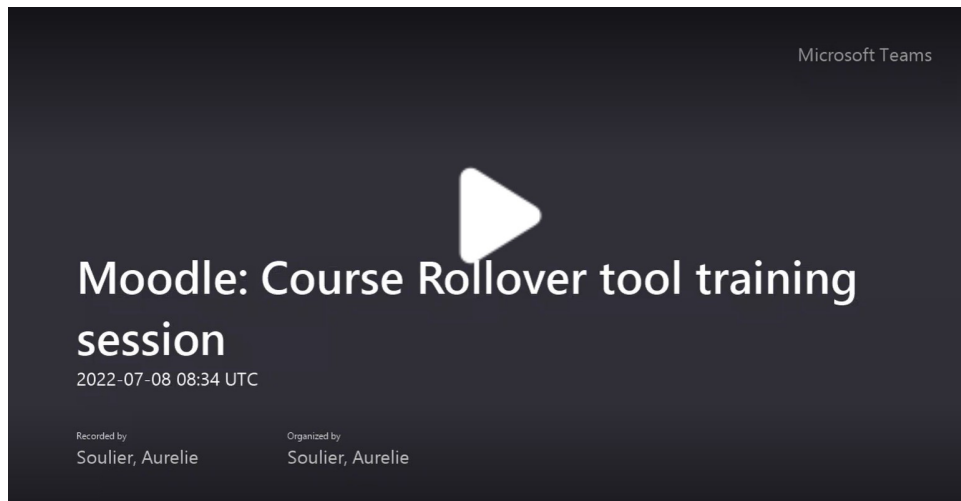
Drop-in session

Every Thursday from 14:00 to 14:30: [join via Teams](#).

Join for any rollover query, support, whatever your role (admin/support, academic staff).

*** In development - to be added in October: training videos ***
In the meantime, please below see the recording of one of our July training sessions.

Course Rollover training session 8th July 2022:



Training videos